



Entomologische Mitteilungen

Herausgegeben vom

Deutschen Entomologischen Institut der Kaiser-Wilhelm-Gesellschaft
zur Förderung der Wissenschaften

Redigiert von Walther Horn

All men of science are brothers . . .
Edgew. David (August 1914)

INHALT

Kempers, K. J. W. Bernet, Abbildungen von Flügelgeäder der Coleopteren. (33 Tafeln mit 792 Figuren).....	p. 71
Priesner, H., A. Dampfs Aegypten-Ausbeute: <i>Thysanoptera</i> . (Mit 8 Textfiguren) (Schluß).....	p. 115
Arendsen Hein, S. A. Larvenarten von der Gattung <i>Tenebrio</i> und ihre Kultur (Col.). (2 Tafeln mit 13 Figuren).....	p. 121
Born, P., Weiterer Beitrag zur Kenntnis der Caraben Ostasiens (Col.)	p. 159
Horn, W., Et meminisse et vaticinari liceat: 13. Über Margarinepreise und anderes	p. 162
Kempers, K. J. W. B., Nachtrag zu den Abbildungen von Flügelgeäder der Coleopteren	p. 162
Neuere Literatur	p. 163

Herr Paul Meyer hat neuerdings dem Deutschen Entomol. Institut den im Erscheinen begriffenen II. Band von Berlese „Gli Insecti“ und Herr B. Schwarzer die *Trichopterygidae* und *Phalacridae* der Flach'schen Sammlung geschenkt, wofür ihnen an dieser Stelle noch einmal herzlicher Dank gesagt sei.

Die Druckpreise sind in letzter Zeit so **katastrophal gestiegen**, daß jede Seite inkl. Papier, Versand usw. über 20000 Mk. kostet! Wir sind deshalb gezwungen, die **Abonnementspreise für Ausländer** in fremder Valuta (wenn auch in bescheidener Höhe) nach folgendem Tarif festzusetzen:

Argentinien.....	2 Pes.	Italien.....	10 Lire
Baltikum.....	25 lett. Rubel	Jugo-Slawien.....	30 Dinare
Belgien.....	15 Francs	Japan.....	3 Yen
Brasilien.....	6 Milreis	Luxemburg.....	10 Francs
Bulgarien.....	90 Leva	Norwegen.....	6 Kronen
Chile.....	6 Pes. (Pap.)	Rumänien.....	100 Lei
Dänemark.....	6 Kronen	Schweden.....	4 ¹ / ₂ Kronen
England.....	5 Shilling	Schweiz.....	6 Francs
Finnland.....	8 Finn. Mark	Spanien.....	6 Peset.
Frankreich.....	15 Francs	Tschecho-Slowakei	20 Kronen
Holland.....	3 Gulden	U.S. Amerika.....	1 ¹ / ₄ Dollar

• Für Polen, Rußland, Ungarn und Türkei wird wegen der Auslandsporti der **Abonnementspreis auf 2000 Mk.** festgesetzt.

Buchhändler können nicht mehr als Abonnenten zugelassen werden, falls sie nicht selbst Entomologen sind. **Mehr als 1 Exemplar** der Zeitschrift kann kein Inländer im Abonnement erhalten.

Die **Jahrgänge IV—X** der „Entom. Mitteil.“ kosten fortan für **Abonnenten** im Inland und Österreich (exkl. Porto) **5000 Mk.** — Für **Buchhändler** und **Ausländer** werden die oben genannten Jahres-Abonnenten-Preise in fremder Valuta dafür berechnet. — Porto extra.

Abschriften von Literatur

können für **Inländer** zum Preise von **500 Mk.** pro deutsche und **600 Mk.** pro fremdsprachige (abgeschriebene) Seite beschafft werden. Für **Ausländer** 100 % Zuschlag. — Porto extra.

Da das Ausleihen fortan vom Verein zur Förderung des D. Ent. Institutes übernommen wird, müssen Entschädigungen für Mühewaltung, Abnutzung usw. erhoben werden, und zwar:

pro **Separatum** für jeden Monat 5—10 Mk., pro **Einzelband** für jeden Monat 20—40 Mk. Dazu für **Verpackung** pro Versand als „Drucksache“ 20—100 Mk., als „Postpaket“ 100—200 Mk. Porto extra.

Die Herren **Autoren** müssen fortan die **Klischees** zu ihren Arbeiten selbst bezahlen, die Selbstkosten zu ihren **Separata** ersetzen und einen **erheblichen Druckzuschuß pro Druckseite** beisteuern. Die Not der Zeit zwingt dazu!

Abbildungen von Flügelgeäder der Coleopteren.

Von K. J. W. Bernet Kempers, Haag.

(33 Tafeln mit 792 Figuren.)

Die angegebenen Zahlen bedeuten die Figuren.

I. Adephaga.

1. Cicindelidae: *Cicindela cincta* L. 1. — *Odontocheila bipunctata* F. 2. — *chrysis* F. 3. — *Pseudoxychila lateguttata* Dej. 4. — *biguttata* Dej. 13. — *Phacoxantha bifasciata* Brullé 5. — *Tetracha fulgida* Brullé 6. — *spinosa* Brullé 14. — *Pogonostoma nigricans* Klug 7. — *Therates labiatus* F. 8. — *Distypsidera gruti* Pasc. 9. — *Heptodonta analis* F. 10. — *Pentacomia egregia* Chaud. 11. — *Thopentica diana* Thoms. 12. — *Collyris bonnellii* Guér. 15.

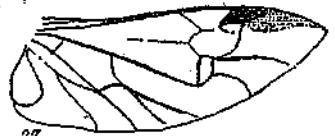
2. Carabidae: *Mormolyce (Mormolycini) phyllodes* Hag. 16. — *Calosoma (Carabini) sycophanta* L. 17. — *reticulatum* F. 53. — *Carabus granulatus* L. 18. — *Leistus (Nebriini) rufescens* F. 19. — *Nebria brevicollis* F. 20. — *Notiophilus (Nctiophilini) aquaticus* L. 21. — *Omophron (Omophronini) limbatus* F. 22. — *Elaphrus (Elaphrini) cupreus* Dfts. 23. — *Lorocera (Lorocerini) pilicornis* F. 24. — *Dyschirius (Scaritini) thoracicus* Rossi 25. — *Clivina fossor* L. 26. — *convexicollis* 54. — *Broscus (Broscini) cephalotes* L. 27. — *Tachypus (Bembidiini) flavipes* L. 28. — *Bembidium ustulatum* L. 29. — *Trechus (Trechini) 4-striatus* Schrank 30. — *Calathus (Pterostichini) fuscus* F. 31. — *Platynus ruficornis* Goeze 32. — *Pterostichus vulgaris* L. — *coerulescens* L. 33. — *Amara (Amarini) spreta* Dej. 34. — *Zabrus (Zabrini) tenebrioides* Goeze 35. — *Harpalus (Harpalini) pubescens* Müll. 36. — *Anisodactylus binotatus* F. 37. — *Dichirotrichus pubescens* Payk. 38. — *Stenolophus mixtus* Herbst 39. — *Acupalpus meridianus* L. 40. — *Badister (Licinini) bipustulatus* F. 41. — *Chlaenius (Chlaeniini) nitidulus* Schrank 42. — *Panagaeus (Panagaeini) cruz-major* L. 43. — *Lebia (Lebiini) cyanocephala* L. 51. — *Dromius 4-maculatus* L. 44. — *Odocantha (Odocanthini) melanura* L. 45. — *Brachynus (Brachynini) explodens* Dfts. 46. — *Catascopus angulatus* Chaud. 47. — *Ophionea interstitialis* 48. — *Dendrocellus geniculatus* 50. — *Colpodes* sp. 52. — *Trichoglottus punctilabris* Mac Leay 55. — *Platymetopus puncticollis* Bosc 56.



25



26



27



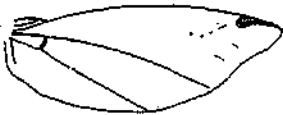
28



29



30



31



32



33



34



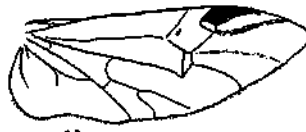
35



36



37



38



39



40



41



42



43



44



45



46



47



48

6*

3. Haliplidae: *Peltodites caesus* Dfts. 58. — *Haliplus ruficollis* De G. 59.

4. Hygrobiidae: *Hygrobia tarda* Herbst 64, 65.

5. Dytiscidae: *Hydroporus (Hydroporini) dorsalis* F. 69. — *pictus* F. 70. — *Hyphyrus ferrugineus* L. 67. — *Hygrotus versicolor* Schall 68. — *Coelambus impressopunctatus* Schall. 71. — *Noterus (Noterini) clavicornis* De G. 73. — *Laccophilus (Laccophilini) obscurus* Panz. 72. — *Pybius (Colymbetini) fuliginosus* F. 74. — *Agabus chalconotus* Panz. 75. — *femoralis* Payk 76. — *Euneetus sticticus* 77. — *Rhantus (Colymbetini) punctatus* Fourc 78. — *Colymbetes fuscus* L. 79. — *Hydaticus (Dytiscini) vittatus* 84. — *Dytiscus latissimus* L. 81. — *marginalis* L. 82. — *Cybister laterimarginalis* De G. 83. — *Platyneetus 10-punctata* 66. — *Aeilus sulcatus* L. 80

6. Gyrinidae: *Gyrinus (Gyrinini) sp.* 88. — *natator* L. 89. — *marinus* Gyll. 90. — *Orectochilus (Orectochilini) villosus* Müll. 91. — *marginipennis* Aubé 92. — *Orectogyrus congoensis* 86. — *Porrhorynchus marginatus* 87. — *landaisi* 63. — *Dinentus subspinosus* 61. — *indicus* 62. — *australis* 85. — *Enhydrus sulcatus* 93.

7. Paussidae: *Paussus cervinus* Kraatz 57. — *armatus* Westw. 94. — *spinicoxis* Westw. 95. — *hova* Dohrn 60. — *cucullatus* Westw. 96. — *Cerapterus horsfieldi* Westw. 97. — *Paussomorphus chevrolati* Westw. 98.

8. Rhysodidae: *Rhysodes exaratus* (nach Redtenbacher) 99.

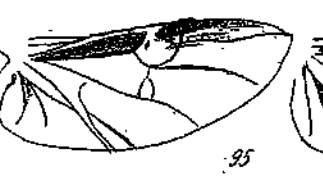
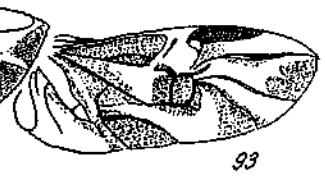
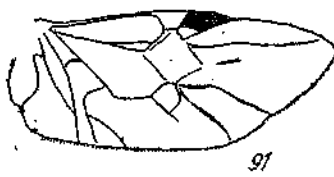
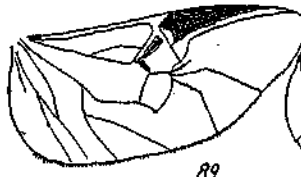
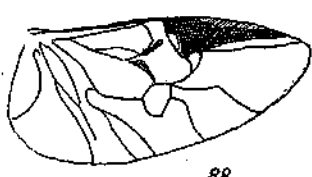
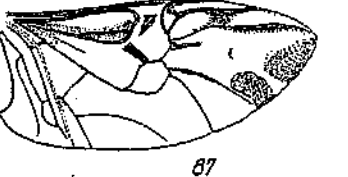
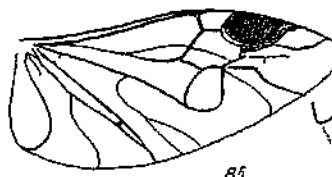
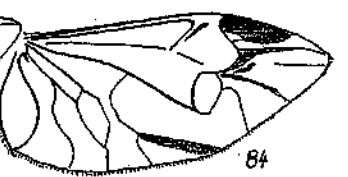
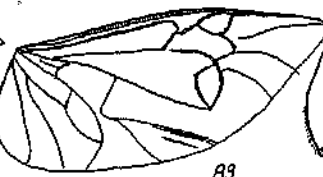
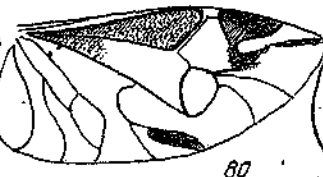
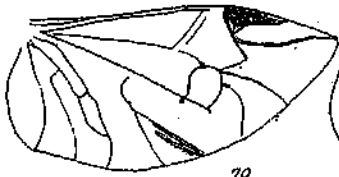
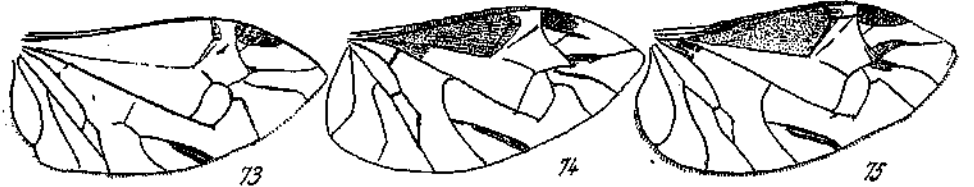
II. Staphylinoidea.

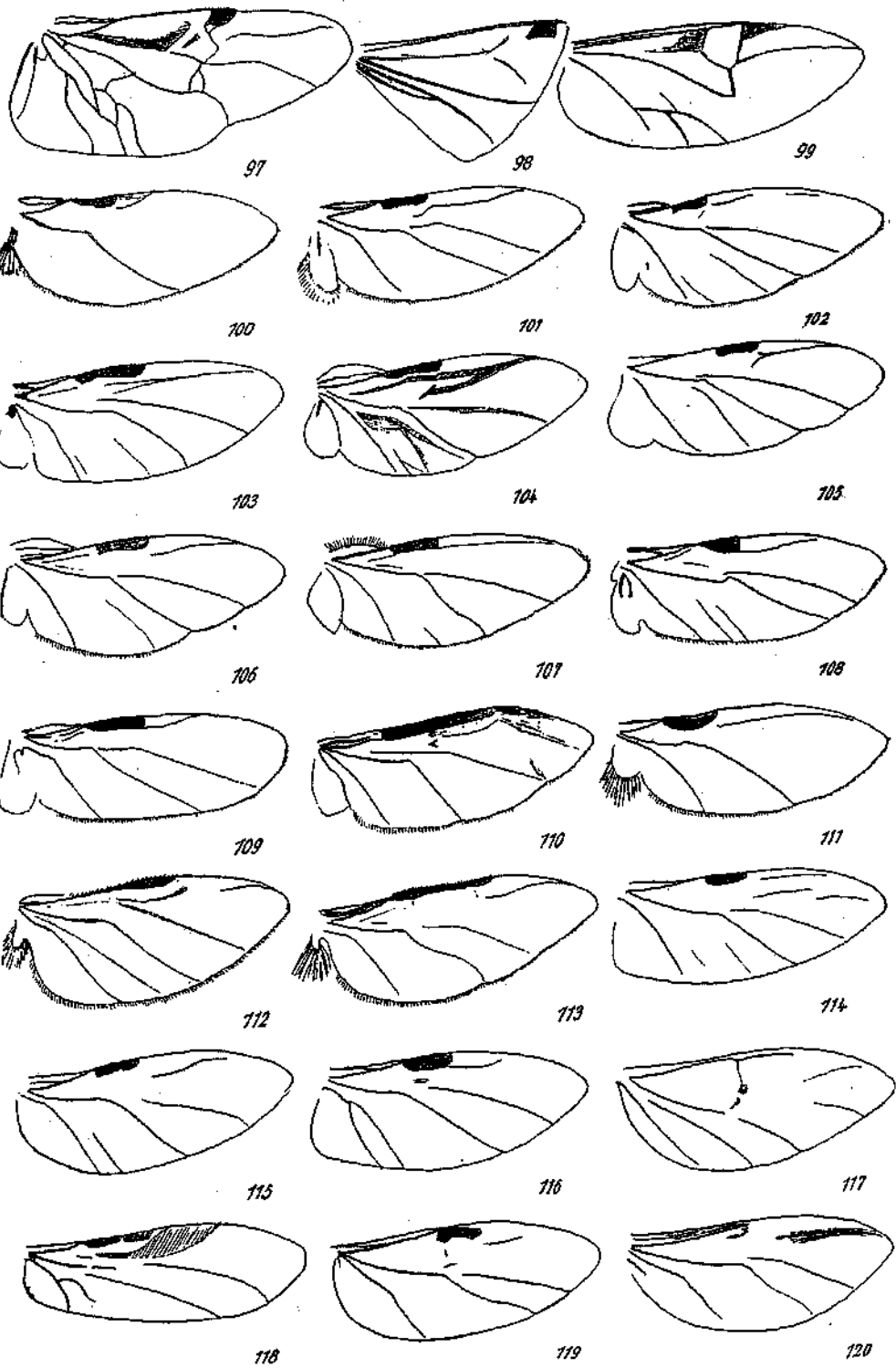
9. Staphylinidae: *Aleochara (Aleocharini) lanuginosa* Grav. 100. — *Tachynus (Tachyporini) flavipes* F. 101. — *Quedius (Quediini) mesomelinus* Mrsh. 102. — *Creophilus (Staphylinini) maxillosus* L. 103. — *Staphylinus olens* Müll. 104. — *Philonthus politus* F. 105. — *Cafius (Staphylinini) xantholoma* Grav. 106. — *Xantholinus (Xantholini) punctulatus* Payk. 107. — *Lathrobium (Paederini) fulvipenne* Grav. 108. — *Stenus (Stenini) bipunctatus* Er. 109. — *Oxyporus (Oxyporini) rufus* L. 110. — *Oxytelus rugosus* F. 111. — *Omalius (Omaliini) rivulare* Payk. 112. — *Megarthus depressus* Payk. 113. — *Tachynus (Tachyporini) subterraneus* L. 114. — *Coprophilus (Oxytelini) striatulus* F. 115. — *Deleaster dichrous* Grav. 116. — *Anthobium (Omaliini) longipenne* Er. 117. — *Leptochirus unicolor* Er. 118. — *Trigonurus sp.* 119.

10. Pselaphidae: *Reichenbachia helferi* Schmidt 122.

11. Micropeplidae: *Micropeplus fulvus* Er. 123.

12. Scydmaenidae: *Clidicus grandis*. Casteln. 124.





13. Silphidae: *Pteroloma* sp. 120. — *Apatetica javanica* Sharp. 121. — *Silpha (Silphini) tristis* Ill. 125. — *atrata* L. 126. — *thoracica* L. 127. — *4-punctata* L. 128. — *discicollis* L. 135. — *americana* L. 136. — *Necrophorus vespilloides* Herbst 129. — *insularis* Herbst 138. — *Necrodes osculans* Herbst 137. — *Choleva (Cholevini) angustata* F. 130. — *Nargus velox* Spence 140. — *Sciodrepa watsoni* Spence 141. — *Catops picipes* F. 131/32. — *Ptomaphagus sericeus* Panz. 139. — *Sphaerites (Agrytini) glabratus* F. 134. — *Agrytes castaneus* Fröhl. 133.

14. Anisotomidae: *Anisotoma (Anisotomini) dubia* Kugel. 145. — *Liodes (Agathidini) humeralis* Kugel. 142. — *glaber* Kugel. 143. — *Agathidium laevigatum* Er. 144.

15. Clambidae: *Clambus armadillo* De G. 146.

16. Corylophidae: *Orthoperus (Orthoperini) brunnipes* Gyll. 147.

17. Trichopterygidae: *Ptenidium (Ptenidiini) evanescens* Marsh 148. — *Oligella (Ptiliini) foveolata* Allib. 149. — *Trichopteryx (Trichopterygini) grandicollis* Mannh. 150.

18. Sphaeriidae: *Sphaerius acaroides* Waltl. 151.

19. Scaphidiidae: *Scaphidium 4-pustulatum* 152. — *Scaphidium 4-maculatum* Oliv. 154. — *Scaphosoma agaricinum* L. 153.

20. Histeridae: *Hololepta (Hololeptini) indica* 155. — *Hister (Histerini) inaequalis* 156. — *Saprinus (Saprinini) aeneus* F. 157. — *Onthophilus (Abraeini) striatus* Forst. 158. — *Hister (Histerini) caffer* 159. — *Macrohister maximus* 160. — *Apoletes foliaceus* 162. — *Omalodes foveola* 161.

III. Actinorrhabda.

21. Passalidae: *Leptaulax bicolor* 163. — *Eriocnemus burmeisteri* 164. — *Passalus interruptus* 165. — *Aceraius marginatus* 166. — *Neleus punctiger* 167. — *Pelops impressicollis* 168. — *Ninus bergi* 181. — *Semicyclus grayi* 182. — *Basilianus cantori* 183.

22. Lucanidae: *Lucanus (Lucanini) cervus* L. 169. — *Dorcus parallelopipedus* L. 170. — *Platyceus caraboides* L. 171. — *Aegus malaccus* 172—174. — *ogivus* 173. — *Metopodontus cinnanomeus* 175. — *Eurytrachelus purpurascens* 176. — *Pholidotus humboldti* 177. — *Odontelabis sommeri* 178. — *Lamprima aurata* 180. — *Neolucanus laticollis* 179.

23. Syntelidae: *Syntela histerooides* (nach Redtenbacher) fehlt.

24. Scarabaeidae: *Trox (Trogini) sabulosus* L. 184. — *Oxyomus (Aphodiini) sylvestris* Scop. 185. — *Aphodius fimetarius* L. 186. — *granarius* L. 187. — *rufus* Mull. 188. — *Geotrupes (Geotropini)*



121



122



123



124



125



126



127



128



129



130



131



132



133



134



135



136



137



138



139



140



141



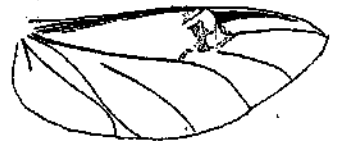
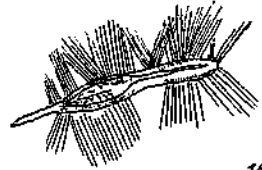
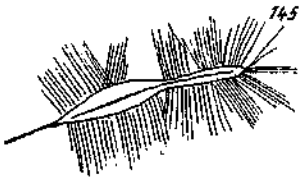
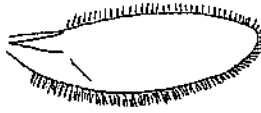
142



143



144





169



170



171



172



173



174



175



176



177



178



179



180



181



182



183



184



185



186



187



188



189



190



191



192

spiniger Mrsh. 189. — *vernalis* L. 190. — *Sisyphus* (*Coprini*) *schaefferi* L. 191. — *Onitocellus fulvus* Goeze 192. — *Onthophagus nuchicornis* L. 193. — *Copris lunaris* L. 194. — *hispanus* 195. — *Catharsius molossus* L. 196. — *Scarabaeus piceus* Ill. 197. — *Megasoma* (*Dynastini*) *elephas* Ill. 198. — *Oryctes nasicornis* L. 199. — sp. 200. — *Melolontha* (*Melolonthini*) *hippocastani* F. 201. — *Polyphylla fullo* L. 202. — *Serica* (*Sericini*) *brunnea* L. 203. — *Phyllopertha* (*Rutelini*) *horticola* L. 204. — *Anomala aenea* De G. 205. — *Hoplia farinosa* L. 206. — *Epicometus hirta* Poda 222. — *Pentelia descendens* Sharp. 207. — *Apogonia expeditionis* Rits. 208. — *Cetonia* (*Cetoniini*) *aurata* L. 209. — *Popilia biguttata* Wied. 210. — *Rhomborrhina hornemanni* 211. — *Dieranorrhina oberthuri* 212. — *Ischiopsopha lucivorax* Kr. 213. — *Macronota regia* F. 214. — ? ? 215. — *Valgus* (*Valgini*) *hemipterus* L. 216. — *Trichius* (*Trichiini*) *rosaceus* Voet. 217. — *Gnorimus nobilis* L. 218. — *Cetonia* (*Cetoniini*) *morio* L. 219. — *Anachalcos* (*Geotrupini*) *cupreus* F. 225. *Exophilus* (*Melolonthini*) *hypolinea* F. 224. — *Diplognatha* (*Cetoniini*) *gagates* F. 223.

25. *Cupepidae*: *Omma stanleyi* (nach Handlirsch) 226. — *Cupes raffrayi* Fairm. 227 (nach d'Orchymont).

IV. Malacodermata.

26. *Pyrophoridae*: *Phengodes hieronymi* Haase 230.
 27. *Drilidae*: *Drilus flavescens* Fourcr 229.
 28. *Lampyridae*: *Luciola mingrelica* 231. — *pallescens* Gerh. 232. — *Lampyrhiza splendidula* L. 233. — *Lampyrus noctiluca* L. 234.
 29. *Lycidae*: *Calopteron* sp. 235. — *Homalilus Fontis-bellaqui* Fourc 236. — *Lygistorpterus sanguineus* L. 237.
 30. *Cantharidae*: (*Thelephoridae*) *Thelephorus* (*Thelephorini*) *rusticus* Fallen 238. — *lividus* L. 239. — *Rhagonycha atra* L. 240. — *Malthinus fasciatus* Ol. 244. — *Callianthia basalis* M. L. 228. — *Ichthyurus* sp. 246.

V. Trichodermata.

31. *Melyridae*: *Malachius* (*Malachiini*) *bipustulatus* L. 241. — *Dasytes* (*Dasytini*) *coeruleus* De G 242 — *Melyrus abdominalis* 245. — *Danacaena* (*Danacaeini*) *pallipes* Panz. 243.
 32. *Corynetidae*: *Corynetus coeruleus* De G. 271.
 33. *Cleridae*: *Tillus* (*Tillini*) *elongatus* L. 272, 273. — *Opilo* (*Clerini*) *domesticum* L. 274. — *Clerus formicarius* L. 275. — *Trichodes apiarius* L. 276. — *crabroniformis* 277. — *javarius* 278. — *Cladiscus laniger* Schnkl. 279. — *Natalis spinipennis* 289. — *Calendyma chiliensis*



193



194



195



196



197



198



199



200



201



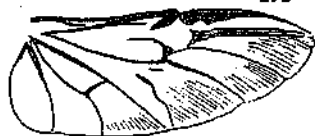
202



203



204



205



206



207



208



209



210



211



212



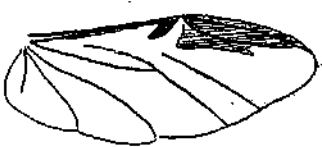
213



214



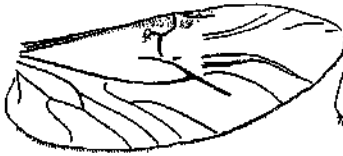
215



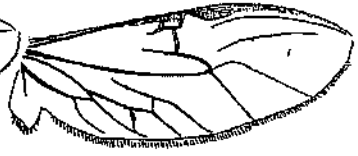
216



265



266



267



268



269



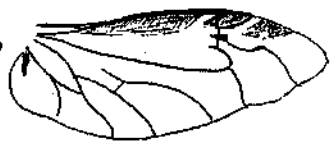
270



271



272



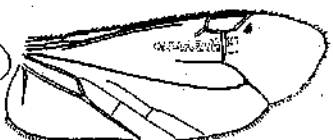
273



274



275



276



277



278



279



280



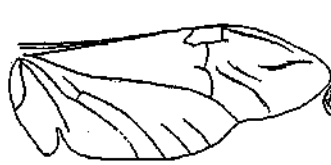
281



282



283



284



285



286



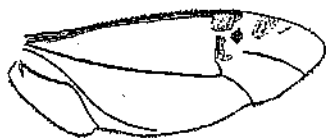
287



288



289



290



291



292



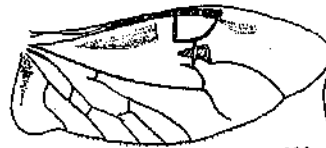
293



294



295



296



297



298



299



300



301



302



303



304



305



306



307



308



309



310



311



312

290. — *Trichodes (Clerini) nutalli* 291. — *Neohydнус* sp. oder *Callimerus* 293. — sp. 294. — *Callimerus pectoralis* Schnkl. 288. — *Ommadius seticornis* 285.

VI. Palpicornia.

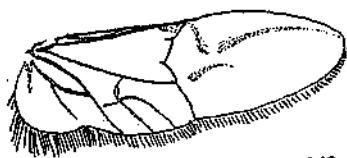
34. Hydrophilidae: *Sternolophus (Hydrophilini) rufipes* 247. — *Hydrophilus piceus* L. 248. — *pistaceus* L. 249. — *Hydrocharus caraboides* L. 250. — *Hydrobius (Hydrobiini) fuscipes* L. 251. — *Philhydrus testaceus* F. 252. — *Cymbiodyta marginella* F. 253. — *Anacaena globulus* Payk. 254. — *Laccobius minutus* L. 255. — *Chaetarthria (Chaetarthriini) seminulum* Payk. 256. — *Berosus (Berosini) luridus* L. 257. — *Cercyon (Sphaeridiini) haemorrhoidalis* F. 258. — *Megasternum boletophagum* Mrsh. 259. — *Spercheus (Spercheini) emarginatus* Schall 260. — *Helophorus (Helophorini) aquaticus* L. 261. — *griseus* Herbst. 267. — *Sphaeridium (Sphaeridiini) scarabaecides* L. 262. — *Cyclonotum (Coelostomini) orbiculare* F. 263. — sp. 266. — *Hydrochus (Helophorini) carinatus* Germ. 264. — *Ochthebius (Hydraenini) marinus* Payk. 265.

VII. Dascyloidea.

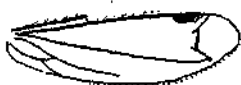
35. Dascyllidae: *Dascillocyphon minor* Everts 280.
36. Cyphonidae: *Microcara testacea* L. 281. — *Cyphon variabilis* Thunb. 282. — *Scirtes hemisphaericus* L. 283. — *Helodes minuta* L. 284.
37. Dascillidae: *Dascillus fulvulus* Wied. 286. — *cervinus* L. 287.
38. Rhipiceridae: *Rhipicera marginata* (nach Redtenbacher) 292.
39. Byrrhidae: *Cytilus (Byrrhini) sericeus* F. 295. — *Nosodendron (Nosodendrini) fasciculare* Oliv. 296. — *Byrrhus (Byrrhini) pitula* L. 292. — *Simplocaria semistriata* F. 293. — *Pedilophorus aeneus* F. 294.
40. Dermestidae: *Dermestes lardarius* L. 298. — *peruvianus* 297. — *vulpinus* F. 302. — *Attagenus pellio* L. 299. — *Megatoma undata* L. 300. — *Anthrenus museorum* L. 301.
41. Heteroceridae: *Heterocerus obsoletus* Curt. 304. — *flexuosus*. Steph. 305.
42. Parnidae: *Potamophilus (Parnini) acuminatus* F. 306. — *muticus* 307. — *Parnus luridus* Er. 308. — *prolifericornis* F. 309. — *Limneus (Elmni) dargelasii* Latr. 310. — *Larcynea aeneus* Müll. 311. — *Elmis volckmari* Panz. 312. — *Cyloepus montanus* 313.
43. Georyssidae: *Georyssus crenulatus* Ross. 314, 315.

VIII. Sternoxia.

44. Elateridae: *Lacon (Agyrpnini) murinus* L. 316 — *vinensis* 317. — *Cardiophorus (Elaterini) assellus* Er. 318. — *Melanotus rufipes*



313



314



315



316



317



318



319



320



321



322



323



324



325



326



327



328



329



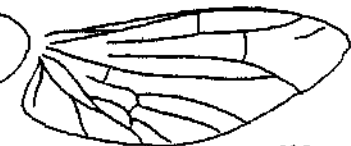
330



331



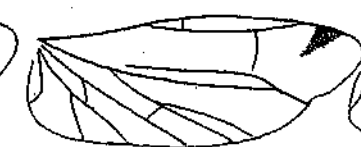
332



333



334



335



336

Herbst 319. — *Limonius aeruginosus* Oliv. 320. — *Athous alpinus* Redt. 321. — *Corymbites purpureus* Poda 322. — *tessellatus* L. 323. — *Dolopius marginatus* L. 324. — *Agriotes obscurus* L. 325. — *Campylus (Campylini) linearis* L. 326. — *Diploconus prominens* 327. — *Allotrius quadricollis* 328. — *Adelocera punctata* 339. — *Fornax humidicollis* 329. — *Crebriorkipis elongatus* 331. — *Oxyopterus mucronatus* 332. — *Smiotus imperialis* 333. — *Pyrophorus pelluscens* 334. — *Tetralobus rotundifrons* Guér. 335. — *Corymbites (Elaterini) latus* F. 336.

45 Eucnemidae: *Melasis (Melasini) buprestoides* L 337.

46. Throscidae: *Throscus dermestoides* L. 338. — *Drapetes equestris* F. 339. — *Lissomus bicolor* 340.

47. Buprestidae: *Trachys (Agrilini) minuta* L. 341. — *Actenodes westermanni* Cast. et Gory 342, 343. — *Ancylocheira rustica* 344. — *Agelia peteli* 345. — *Catexantha opulenta* Gory 346. — *Chalcophora mariana* 347. — *Chrysaspis aurata* F. 348. — *Chrysochroa kerremanni* 349. — *edwardsi* 350. — *purpureiventris* Dryd. 351. — *mutabilis* Oliv. 352. — *fulminans* 353. — *Chrysodema granulosa* Kerr. 354. — *Cyphogastra nitida* Kerr. 355. — *Cyphogastra* sp. 356. — *Demochroa gratiosa* Degr. 357. — *Epistomentis vittatus* Phil. 358. — *Euechroma gigantea* 359. — *Philoceanus maitlandi* Lansb. 360. — *Steraspis speciosa* Klug 361. — *Stigmodera spinicola* Gory 362. — *cruz* S. 363. — *flavopicia* Boisd. 364. *lebasii* 365. — *sieboldi* C. et G. 366. — *variabilis* 367. — *vittatus* 368. — *xanthospilota* Hope 369. — *Agrilus (Agrilini) coerulescens* Rossi 370. — *acutus* Thunb. 371. — *Capnodis anthracina* Fisch. 372. — *tenebrionis* 373. — *Castalia bipustulata* L. 374. — *Cisscis chalcopterus* Germ. 375. — *leucosticta* 376. — *Chrysobothris* sp. 377. — *Conognatha amoena* Kirby 378. — *pretiosissima* 379. — *principalis* Klug 380. — *Dicerca acnea* 381. — *divaricata* 382. — *Hyperantha salli* Rojas 383. — *Pelecopselaphus depressus* F. 384. — *Polycesta depressa* L. 385. — *Psiloptera scintillans* Thomas 386. — *plagiata* 387. — *dilatocollis* 388. — *plagicollis* 389. — *Sternocera luctifera* 390. — *Julodes gariepina* Péring. 391. — *humeralis* Gory 392. — *iris* C. et G. 393. — *laevicostata* 394.

IX. Bostrychoidea.

48. Lymexylonidae: *Atractocerus emarginata* Cast. 395. — *Hylecoetus dermestoides* L. 396.

49. Sphindidae: *Sphindus hispidus* Payk. 397.

50. Cissidae (Cioidae): *Cis (Cisini) boleti* F. 398. — *Ennearthron cornutum* Gylh. 399.

51. Ptinidae: *Ptinus (Ptinini) fur.* ♂ L. 400.

52. Lyctidae: *Lyctus unipunctatus* Herbst 401.



361



362



363



364



365



366



367



368



369



370



371



372



373



374



375



376



377



378



379



380



381



382



383



384

53. Anobiidae: *Priobium (Dryophilini) castaneum* F. 402. — *Ochina (Xyletinini) hederae* Müll. 403. — *Hedobia (Hedobiini) imperialis* L. 404. — *Coenocara (Dorcatomini) bovistae* Hoffm. 405. — *Ptilinus (Xyletinini) pectinicornis* L. 406. — *Ernobius (Anobiini) mollis* L. 407.

54. Bostrychidae (Apatidae): *Rhizopertha dominica* F. 412. — *Apate capucinus* L. 408. — *terebrans* 409. — *Xylotrips flavipes* 444. — *Heterobostrychus aequalis* 411.

55. Melandryidae: *Tetratoma (Tetratomini) fungorum* F. 413. — *Orchesia (Orchesiini) picea* Herbst 414. — *Melandrya (Melandryini) caraboides* L. 415.

56. Mordellidae: *Mordella (Mordellini) 10-guttata* 416. — *fasciata* F. 417. — *Anaspis (Anaspini) maculata* Fourc. 419. — *frontalis* L. 418. — *pulicaria* Costa 420.

57. Rhipidophoridae: *Emenadia flabellata* (nach Redtenbacher) 421.

58. Oedemeridae: *Asclera (Asclerini) coerulea* L. 422. — *Oedemera (Oedemerini) podagrariae* L. 423. — *nobilis* Scop. 424, 427. — *lurida* Marsh. 425. — *Nacertes (Nacertini) melanura* L. 426.

59. Pythidae: *Pytho (Pythini) depressus* L. 430. — *Rhinosimus (Salpingini) planirostris* F. 428. — *Salpingus castaneus* Panz. 429.

60. Anthicidae: *Notoxus (Anthicini) monoceros* L. 431. — *Anthicus floralis* L. 432.

61. Pyrochroidae: *Pyrochroa serraticornis* Scop. 433.

62. Meloidae: *Lytta (Lyttini) vesicatoria* L. 434. — *Cerocoma schaefferi* L. 435. — *Epicauta ruficeps* 436. — *Horia cephalotes* 437. — *Zonabris* Sp. 438. — *Oenas afer* L. 441. — *Cissites testaceus* 439. — *Zonabris interrupta* Ol. 440.

63. Nilionidae: *Nilio* sp. (nach Redtenbacher) 442.

64. Trictenotomidae: *Trictenotoma childreni* (nach Redtenbacher) 443.

65. Othniidae: *Othnius delusus* Pasc. 410.

66. Lagriidae: *Lagria hirta* L. 445. — *albohirta* Wied. 446. — sp. 447.

67. Cistelidae: *Mycetochares (Mecetocharini) linearis* Ill. 448. — *Oteniopus (Omophilini) flavus* Scop. 449.

68. Tenebrionidae: *Opatrum (Opatrini) sabulosum* L. 450. — *Microsolum tibiale* F. 451. — *Diaperinus (Diaperini) boleti* L. 452. — *Tribolium (Ulomini) ferrugineum* Muls. 453, 454. — *Uloma* sp. 455. — *Alphitobius diaperinus* Panz. 456. — *Tenebrio (Tenebrionini) molitor* L. 457, (Puppe), 458. — *Nalassus (Helopini) laevioctostriatus* Goeze 459, 460, 461. — *Dietyssus longicus* 463. — sp. 462. — *Scotaeus pretiosus* 464.



409



410



411



412



413



414



415



416



417



418



419



420



421



422



423



424



425



426



427



428



429



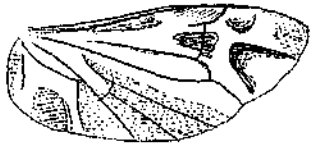
430



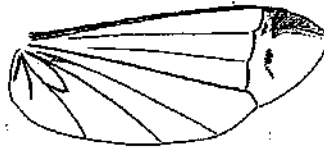
431



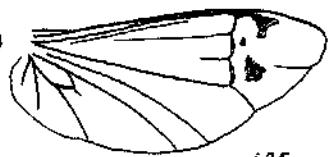
432



433



434



435



436



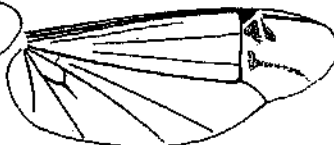
437



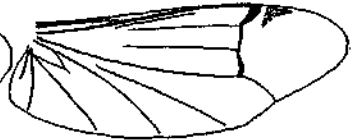
438



439



440



441



442



443



444



445



446



447



448



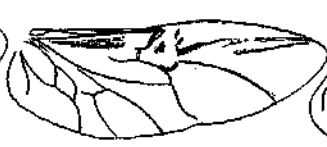
449



450



451



452



453



454



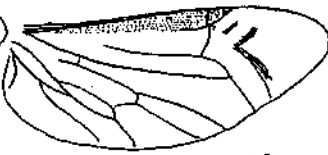
455



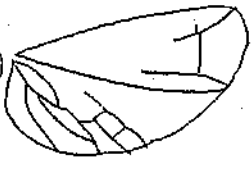
456



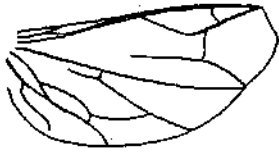
457



458



459



460



461



462



463



464



465



466



467



468



469



470



471



472



473



474



475



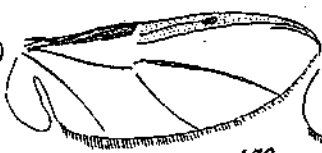
476



477



478



479



480

— *Amarygmus cuprarius* 465. — *Strongilium ambiginum* Möhl. 466.
 — *gigas* 467. — *Ceropria induta* 468. — *Toxicum* sp. 469. — *Setenus coracina* 470. — *Liochrodes discoidalis* 471.

69. Rhysopaussidae: *Ziaelas insolutus* Fairm. 472.

X. Clavicornia.

70. Cucujidae: *Cucujus (Cucujini) imperialis* Lew. (nach Redtenbacher) 473. — *Laemophloeus ferrugineus* Steph. 474. — *Hyllota (Hyllotini) planatus* L. 475. — *Psammoechus (Psammoechini) bipunctatus* F. 476. — *Silvanus (Silvanini) unidentatus* F. 477.

71. Monotomidae: *Monotoma angusticollis* Gylh. 478.

72. Nitidulidae: *Brachypterus (Brachypterini) glaber* Newm. 479. — *Epuraca (Nitidulini) aestiva* L. 480. — *Nitidula bipustulata* L. 481. — *Amphotis marginalis* F. 482. — *Soronia grisea* L. 483. — *Omosita colon* Er. 484. — *Meligethes (Meligethini) brassicae* Scop. 485. — *Pocadius (Pocadiini) ferrugineus* F. 486. — *Cychramus (Cylloidiini) luteus* F. 489. — *4-punctatus* 488. — *Ips (Ipini) 4-guttatus* F. 491. — *Pithyophagus ferrugineus* L. 492. — *Rhizophagus (Rhizophagini) bipustulatus* F. 493. — *Meligethes (Meligethini) viridescens* F. 487. — *Idaethina meligethoides* F. 494. — *Cryptarcha (Ipini) strigata* F. 490.

73. Byturidae: *Byturus fumatus* F. 495.

74. Trogositidae: *Alindria granäis* 496. — *Nemosoma (Nemosomini) elongata* L. 497. — *Trogosita (Trogositini) mauritanica* L. 498. — *Tenebrioides pini* (nach Burmeister) 499. — *Peltis (Peltini) ferrugineum* L. 500.

75. Cryptophagidae: *Telmatophilus (Telmatophilini) caricis* Oliv. 501. — *Anthophagus (Cryptophagini) silaceus* Herbst 502. — *nigricornis* F. 504. — *Cryptophagus lycoperdi* Herbst 503. — *Atomaria fuscipes* Gyll. 505.

76. Tritomidae: *Tritoma picea* F. 506. — *Typhaea fumata* L. 507. — *Litargus bifasciatus* F. 517. — *Xiphyllus dilhaudi* 303.

77. Phalacridae: *Phalacrus corruscus* Panz. 508. — *Olibrus bicolor* F. 509. — *Stilbus testaceus* Panz. 510.

78. Erotylidae: *Engis bipustulata* Thunb. 511. — *Cyrtotriplax bipustulata* F. 512. — *Enecaustes verticalis* 513. — *Episcapha 4 maculata* 514. — *Triplatomia attenuata* Crull. 515.

79. Languriidae: *Tetralanguria elongata* F. 516.

80. Lathridiidae: *Enicmus (Lathridiini) minutus* L. 519. — *Cononimus nodifer* Westw. 520. — *Corticaria (Corticarini) serrata* Payk. 522. — *Melanophthalma fuscula* Humm. 521. — *Lathridius angusticollis* Gyll. 518.



487



482



483



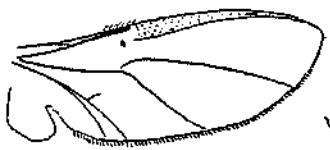
484



485



486



487



488



489



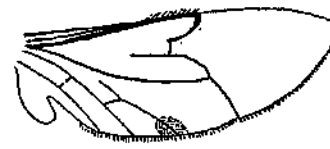
490



491



492



493



494



495



496



497



498



499



500



501



502



503



504



505



506



507



508



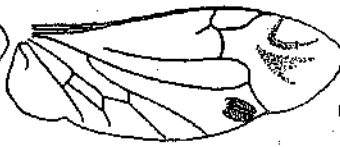
509



510



511



512



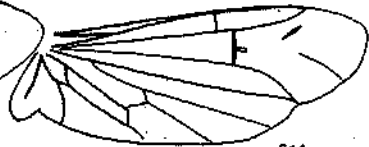
513



514



515



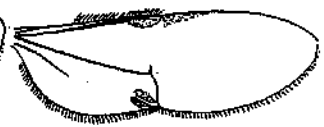
516



517



518



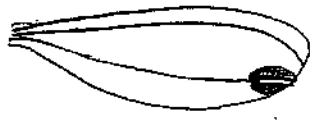
519



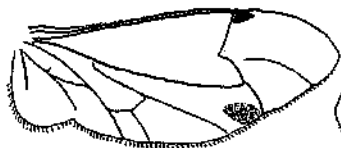
520



521



522



523



524



525



526



527



528



529



530



531



532



533



534



535



536



537



538



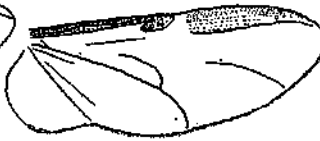
539



540



541



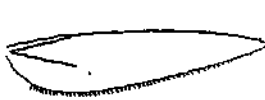
542



543



544



545



546



547



548



549



550



551



552

81. Colydiidae: *Ditoma (Synchitini) crenata* F. 523. — *Orthocerus (Orthocerini) muticus* L. 524. — *Cerylon (Cerylonini) histeroideus* F. 525. — *Endophloeus spinulosus* 526. — *Colydium (Colydiini) filiforme* F. 528. — *Hyberis* sp. 527.

82. Endomychidae: *Endomychus* sp. 529.

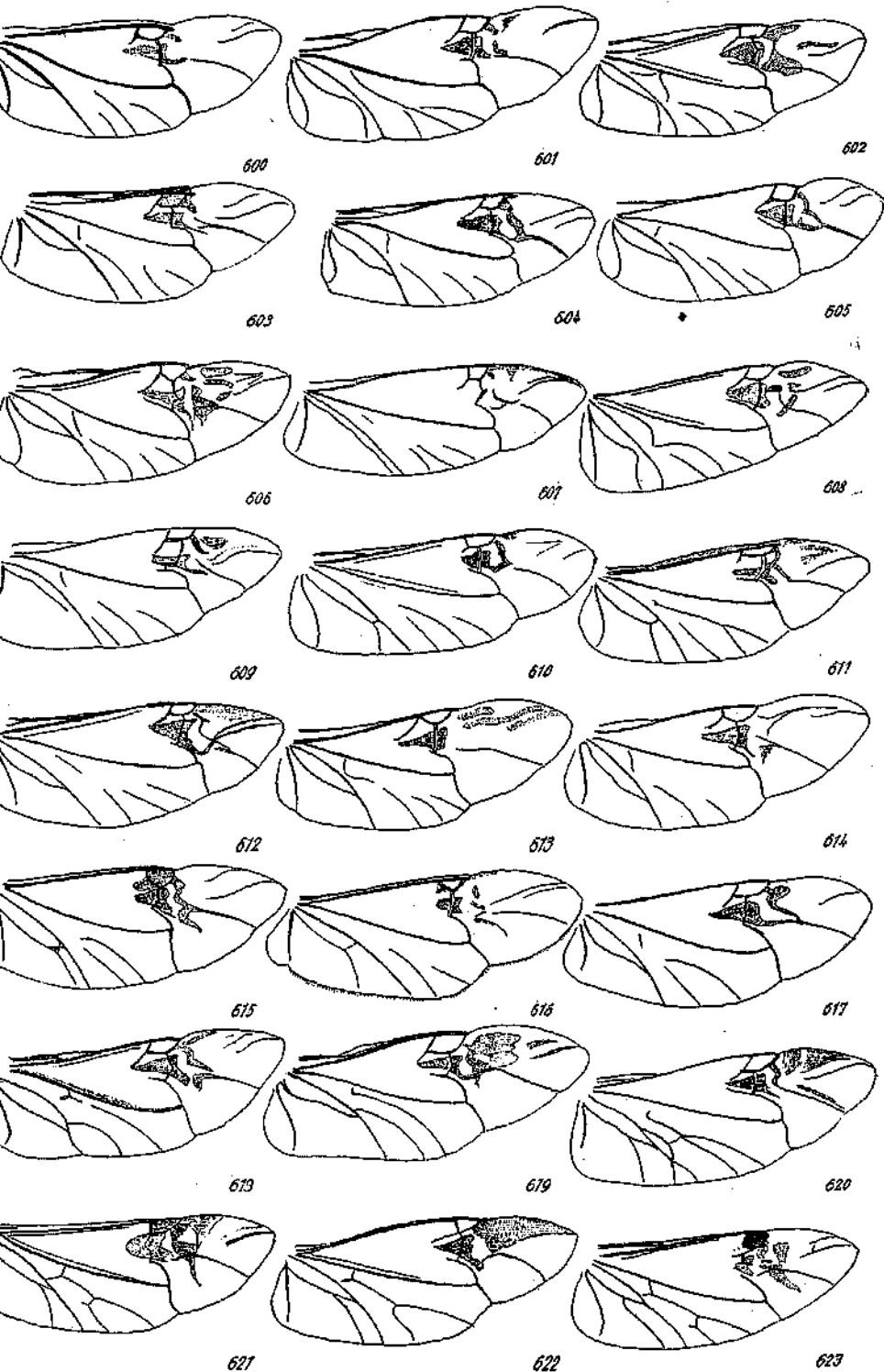
83. Eumorphidae: *Eumorphus bipunctatus* Perty 530. — *4-gulatus* 531. — *Eumniphus marginatus* 532.

84. Coccinellidae: *Chilocorus (Chilocorini) renipustulatus* Scriba 533. — *Epilachna (Epilachnini) pusillanima* 534, 535. — *argus* Fourc 544. — *Subcoccinella 24-punctata* L. 536, 548. — *Coccinella (Coccinellini) 7-punctata* L. 537. — *microglyphica* L. 538. — *oblongopunctata* L. 539. — *Rhisobius (Rhisobiini) litura* F. 540. — *Coccidula scutellata* Herbst 541. — *rufa* Herbst 542. — *Scymnus (Scymnini) nigrinus* Kugel 543. — *Rhisobius (Rhisobiini) chrysoloides* Herbst 545. — *Anisosticta (Coccinellini) 19-punctata* L. 547. — *Exochemus (Chilocorini) flavipes* Thunb. 552. — *Coccinella (Coccinellini) 22-punctata* L. 551. — *variabilis* Herbst 550. — *Scymnus (Scymnini) brunneus* 546. — *Neda sanguinea* 549. — *Exochomus (Chilocorini) sp.* 553.

XI. Phytophaga.

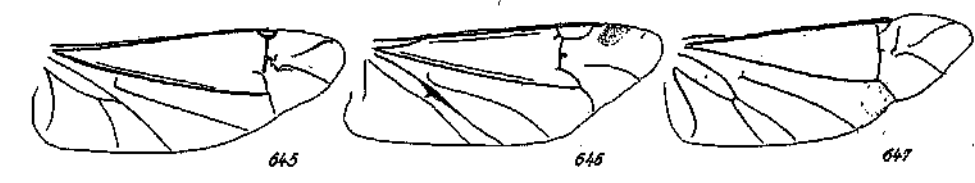
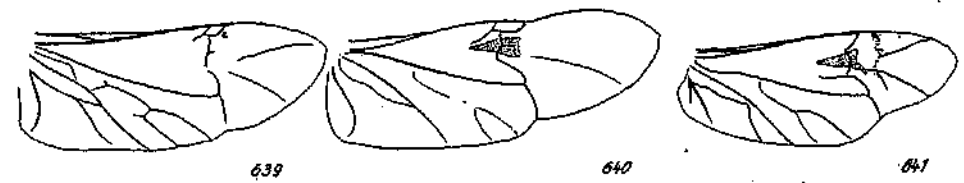
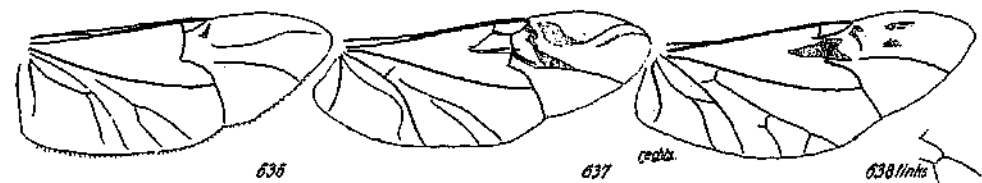
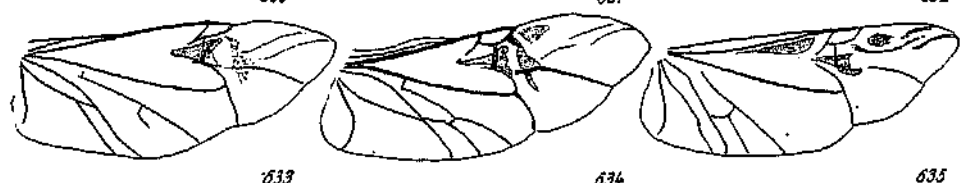
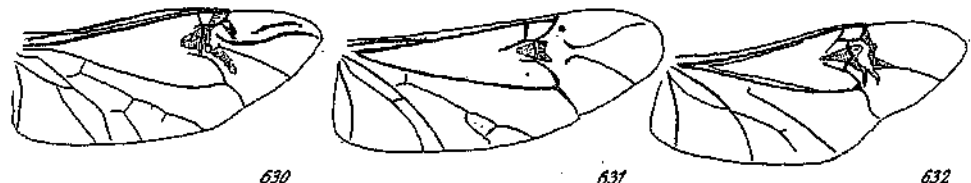
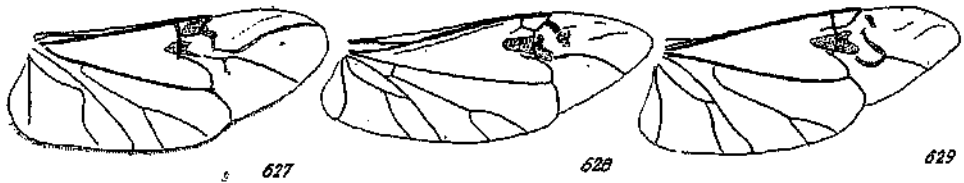
85. Prionidae: *Xixuthrus (Prionini) microcerus* 556. — *Prionus coriarius* L. 557. — *laticollis* Drury 558. — sp. 559. — *Orthomegas (Callipogonini) cinnamomeus* L. 560. — *Mallospis (Derancistrini) leucaspis* Guér. 561. — *Pyrodes nitidus* F. 562. — *Cyrtognathus (Callipogonini) buqueti* 563. — *Mallogen (Macrotomini) downesi* Hope 564. — *Macrotoma palmata* F. 565. — *Aegosoma (Prionini) marginale* 566. — *Pyrodes (Derancistrini) speciosus* Oliv. 567. — *Ergates (Prionini) faber* L. 568. — *Aulacopus natalensis* 569. — *Lophostermus indicus* 570. — *Orthosomus (Callipogonini) brunneus* 571.

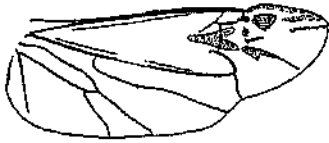
86. Cerambycidae: *Rhagium (Lepturini) mordax* 571a. — *inquisitor* Fourc. 572. — *Spondylis (Spondyliini) buprestoides* L. 573. — *Leptura (Lepturini) fulva* De G. 574. — *Grammoptera ruficornis* 575. — *Leptura armata* 576. — *Gaurotes virginea* 577. — *Notorrhina (Cerambycinae) muricata* 578. — *Necydalis major* 579. — sp. (nach Handlirsch) 580. — *Molorehus panzeri* Harold 581. — *Aemocera (Lamiinae) compressa* 582. — *undulata* Qued. 583. — *Discopus spectabilis* Bates 584. — *Cotops leucostictica* 585. — *Liopus (Lamiinae) nebulosus* 586. — *Pogonochaerus hispidus* 587. — *Batocera albofasciata* Dej. 588, 602. — *Carnecades championi* 589. — *Cereopsius niassicus* 590. — *praetorius* 591. — *Oncoderes* sp. 592. — *Glenea hygia* 594. — *Spenura camilla* 595. — *Nitocris* sp. 596. — *Epicedia*



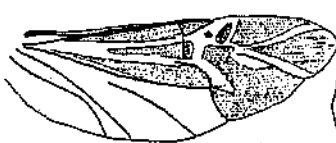
maculatrix Perty 597. — *Ceroplesis aestuans* 598. — *Batocera hector* Thoms. 599. — *Ceroplesis aethiops* F. 600. — *Lamia textor* L. 601. — *Batocera albofasciata* 602. — *Tmesisternus politus* Blanch. 603. — *Trigonoptera spilonota* 605. — *Phryneta spinator* 606. — *Apriona flavescens* Kaup 607. — *Neocerambyx* sp. 608. — *Gnoma (Lamiinae) longitarsus* Pasc. 609. — *Saperda carcharias* 610. — *Gerania (Cerambycini) bosci* 611. — *Sphingnotis (Lamiinae) albertisi* Gest. 612. — *Phryneta spinator* 613. — *Inesida leprosa* 614. — *Volumnia (Lamiinae) westermanni* Thoms. 615. — *Nupserha fricator* 616. — *Dryoctenes (Lamiinae) scrupulosus* Germ. 617. — *Zographus aulicus* Bert. 618. — *Tragocephala variegata* 619. — *Pachyta (Lepturini) Amaculata* 620. — *Plocederus (Cerambycinae) bennigseni* 621. — *Stromatium barbatum* 622. — *Cerambyx (Cerambycini) cerdo* L. 623. — *Hamaticherus plicatus* Ol. 624. — *Mallambyx raddei* 625. — *Pachydissus* sp. 626. — *Ceresium (Callidiopini) flavipes* 627. — *Trachyderus (Trachyderini) thoracicus* 628. — *Euburia (Eburini) sp.* 629. — Unbekannt. 630. — *Hesperophanus (Cerambycinae) sp.* 631. — *Sternotomis (Lamiinae) bohemani* Chev. 632. — *Lophonocerus (Sternacanthini) hirticollis* 633. — *Sternotomis (Lamiinae) imperialis* F. 634. — *Leptura (Lepturini) chrysomeloides* 635. — *Gracilia (Cerambycini) minuta* 636. — *Stirastoma (Lamiinae) depressum* L. 637. — *Dorcacerus (Dorcacocerini) barbatus* Ol. 638. — *Megaderus (Megaderini) stigma* L. 639. — *Stirastoma (Lamiinae) marmoratum* Thnb. 640. — *Paranda glabra* 641. — *Ceroplesis (Lamiinae) hottentotta* F. 642. — *Xystrocera globosa* Oliv. 643. — *Hylotrupes bajulus* L. 644. — *Aromia moschata* L. 645. — *Clytus arcuatus* L. 646. — *Nupserha fricator* Dalm. 647. — *Trachyderes (Trachyderini) succinctus* L. 648. — *Stenopterus rufus* L. 649. — *Chloridolum klaesii* 650. — *Trachyderes (Trachyderini) cayennensis* 651. — *dimidiatus* 652. — *Litopus (Callichromini) sp.* 653. — *caffer* 654. — *Cyllene cayennensis* 655. — *Chrysoprasis (Heteropsini) ruficoxis* Bates 656. — *Purpuricenus köhleri* L. 657. — Unbekannt. 658. — *Caenoptera (Cerambycini) minor* L. 659.

87. Chrysomelidae: *Sagra (Sagrini) femorata* 660. — sp. 661. — *Zeugophora (Crioocerini) flavicollis* Marsh. 662. — *subspinoso* F. 663. — *Plateumaris (Donaciini) braccata* Scop. 664. — *rustica* Kunze 665. — *consimilis* Schrank 666. — *Donacia clavipes* F. 667. — *bicolora* Zschach 668. — *linearis* Hoppe 669. — *versicolor* Brahm 670. — *dentata* Hoppe 671. — *semicuprea* Panz. 672. — *Chrysochares asiatica* 673. — *Adexus (Eumolpini) obscurus* L. 674. — *Eumolpus cupreus* 675. — *Aspidomorpha similis* 676. — *punctata* 677. — *Cassida (Cassidini) murraea* L. 678. — *nobilis* L. 679. — *vibex* L. 680. — *nebulosa* L. 681. —

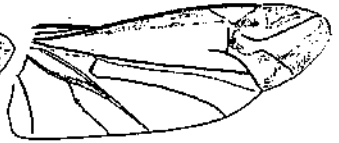




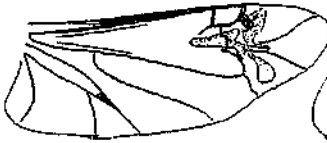
648



649



650



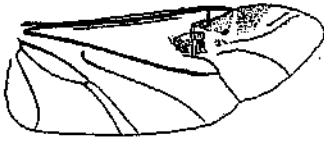
651



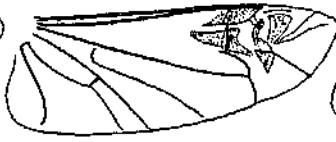
652



653



654



655



656



657



658



659



660



661



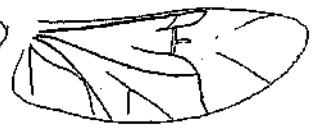
662



663



664



665



666



667



668



669



670



671



672

673

674



675

676

677



678

679

680



681

682

683



684

685

686



687

688

689



690

691

692



693

694

695

Coptocycla catenata 682. — *Polychalcia variolosa* 683. — *Alurnus marginatus* Guér. 684. — *Hispa (Hispini) atra* L. 685. — *Clytra (Clytrini) cyanea* F. 686. — *affinis* Hellw. 687. — *Cryptocephalus (Cryptocephalini) sericeus* L. 688. — *Clytra (Chlytrini) 4-punctata* L. 689. — *Sphaerometopa melanocephala* 690. — *acroleuca* 691. — *Gonioetena (Chrysomelini) viminalis* L. 692. — *Haplosonyx abicornis* 693. — *Aplosonyx abicornis* 694. — *Sermyla (Galerucini) halensis* L. 695. — *Gonioetena (Chrysomelini) olivacea* Forst. 696. — *Luperus (Galerucini) flavipes* L. 697. — *longicornis* F. 698. — *Oides* sp. 699. — *Galeruca (Galerucini) rustica* Schall. 700. — *tanacetii* L. 701. — *Podagrica (Halticini) fuscicornis* L. 702. — *Doridea insignis* 703. — *Aulacophora acutipennis* F. 704. — *Ortholaca ancora* Redt. 705. — *serena* Boh. 706. — *Phyllocharis undulatus* 707. — *Orina (Chrysomelini) polymorpha* 708. — *gloriosa* 709. — *Chrysomela hyperici* Forst. 710. — *polita* L. 711. — *sanguinolenta* L. 712. — *haemoptera* L. 713. — *varians* Schall. 714. — *Melasoma viginti punctata* Scop. 715. — *tremulae* F. 716. — *populi* L. 717. — *saliceti* Weise 718. — *Gastroidea viridula* De G. 719. — *Crioceris (Criocerini) lilii* Scop. 720. — *asparagi* L. 721. — *12-punctata* L. 722. — *Lema melanopa* L. 723. — *cyanella* L. 724. — *Gonophora haemorrhoidalis* 725. — *Prasocuris (Chrysomelini) phellandrii* L. 726. — *Anisodera* sp. 727. — *Botnjopa sanguinea* 728. — *Graptodera cyanea* 729. — *Crepidodera (Halticini) transversa* Mrsh. 730. — *ferruginea* Scop. 731. — *Mantura chrysanthemii* Koch 732. — *Haltica oleracea* L. 733. — *querce-torum* Foudr. 734. — *Sebaethe affinis* Jac. 735. ? ? 736.

88. Bruchidae: *Bruchus pisorum* L. 737. — *rufimanus* Boh. 738. — *villosus* F. 739. — *Caryoborus baetris* 740.

89. Platyrrhinidae: *Urodon (Urodonini) rufipes* Ol. 741. — *Brachytarsus variegatus* Fourc 742. — *Macrocephalus (Platyrrhinini) albinus* 743. —

90. Anthribidae: *Mecocerus gasella* 744. — *Eucorynus crassicornis* 746.

91. Nemonychidae: *Rhinomacer attelaboides* F. 745.

92. Platypidae: *Crossotarsus bonvouloiri* 747. — *Platypus solidus* 748.

93. Scolytidae: *Scolytus (Scolytini) destructor* Ol. 749. — *Myelophilus (Hylesinini) piniperda* L. 750. — *Hylastes (Hylastini) ater* Payk. 751. — *Tomicus (Tomicini) 6-dentatus* Boerner 752. — *laricis* F. 753. — *Xylocleptes bispinus* Dfts. 754.

94. Curculinidae: *Apoderus (Attelabini) coryli* L. 755. — *Attelabus nitens* Scop. 756. — *Rhynchites (Rhynchitini) nanus* Payk. 757. — *Apion (Apionini) marchicum* Herbst. 758. — *Phyllobius (Phyllo-*



696



697



698



699



700



701



702



703



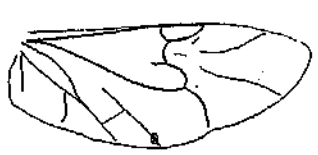
704



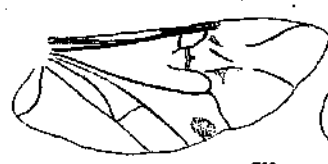
705



706



707



708



709



710



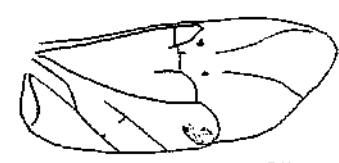
711



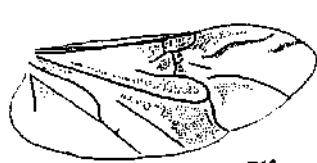
712



713



714



715



716



717



718



719



720



721



722



723



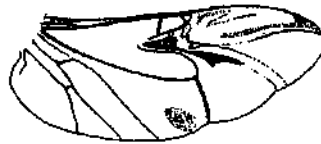
724



725



726



727



728



729



730



731



732



733



734



735



736



737



738



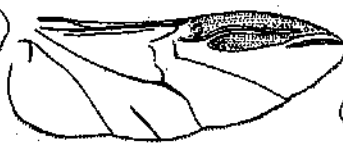
739



740



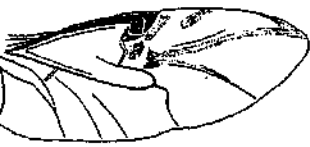
741



742



743



744



745



746



747



748



749



750



751



752



753



754



755



756



757



758



759



760



761



762



763



764



765



766



767



768



769



770



771



772



773



774



775



776



777



778



779



780



781



782



783



784



785



786



787



788



789



790



791

biini argentatus L. 759. — *Sitona* (*Sitonini*) *grisca* F. 760. — *Hypera* (*Hyperini*) *punctata* F. 761. — *Cleonus* (*Lixini*) *sulcirostris* L. 762. *Lepyryus* (*Curculionini*) *palustris* Scop. 763. — *Larinus* (*Lixini*) *maurus* 764. — *Curculio* (*Curculionini*) *abietis* L. 765. — *Tanysphyrus* (*Tanysphyrini*) *lemnae* Payk. 766. — *Stenopelmus rufinasus* Gyll. 767. — *Grypidius* (*Eriirhinini*) *equiseti* F. 768. — *Dorytomus dejeani* Faust 769. — *Orchestes* (*Orchestini*) *quercus* L. 770. — *Anthonomus* (*Anthonomini*) *rubi* Herbst 771. — *Magdalis* (*Magdalini*) *duplicata* Germ. 772. — *Mecinus* (*Gymnetrini*) *piraster* Herbst 773. — *Cryptorrhynchus* (*Pissodini*) *lapathi* L. 774. — *Cionus* (*Cionini*) *scrophulariae* L. 775. — *Mononychus* (*Ceuthorrhynchini*) *punctum album* Herbst 776. — *Ceuthorrhynchus marginatus* Payk. 777. — *Balaninus* (*Balaninini*) *venosus* Grav. 778. — *Calandra* (*Calandrini*) *oryzae* L. 779. — *Episomus simulator* Faust 780. — *Cossonus* (*Cossonini*) *planatus* Bedel 781. — *Sipalus gigas* 782. — *guinensis* 782. — ? 784. — ? (Kl. Klapperkäfer) 785.

95. Brenthidæ: *Baryrhynchus deluxus* 786. — *Schizotrachelus brevicaudatus* 787. — *Eutrachelus temmincki* 788. — *Dimrus fuscillatus* Gyll. 789. — ? 790. — *Magacerus pubescens* 791.

A. Dampfs Aegypten-Ausbeute: Thysanoptera.

Von H. Priesner, Linz.

(Mit 8 Textfiguren.)

(Schluß.)

Es liegen mir auch drei zu dieser Art gehörige Puppen vor, die sich durch sehr lange Borsten auszeichnen. Prothorax in derselben Anordnung wie bei der Imago beborstet. Die Flügelscheiden erreichen etwa das 5. Abdominalsegment, die Außenränder der vorderen sind mit je 6 langen Borsten versehen (längste 68 μ), die an kleinen Erhebungen sitzen. Am 9. Abdominaltergit des ♀ sehe ich oben 4 nicht besonders lange (11 μ) Stacheln, die voneinander ziemlich weit abstehen (Abb.). Das letzte Segment ist nicht spitzig ausgezogen.

Fundorte: 2 Larven, 3 Puppen, Madi, 13. VIII. 1919, Sonnenblume, im Gespinst von Spinnmilben!; 1 ♀, 1 Larve, Madi, 16. VIII. 1919, in Blüten der oben (*Anaph. antilope*!) genannten Komposite; 2 ♀♀, Madi, 21. VII. 1919, aus der Lebensgemeinschaft der dichten Bestände einer *Chenopodiacee* (*Echinopsilon*?) am Niluferhang; 1 Larve, Madi, 13. VIII. 1919, *Echinopsilon* (?), zwischen Milben (!).